

Mouse Granzyme B ELISA Instructions

Cat: EM0016

Content

	CAT	Volume
1 CP (Coated Plate)	EM0016CP	96 well
2 S (Standard)	EM0016S,S1-S7,S0	9 vial
3 DA (Detect Antibody)	EM0016DA	6 ml/bottle
4 SH (Streptavidin-HRP)	ESH03	12 ml/bottle
5 AB (Assay Buffer 1×)	EAB01	12 ml/bottle
6 TS (TMB Substrate)	ETS01	12 ml/bottle
7 SS (Stop Solution)	ESS01	12 ml/bottle
8 WB (Wash Buffer 10×)	EWB01	50 ml/bottle
9 SF (Sealer Film)	ESF01	6 pieces

NOTE: After the kit is opened, the stabilization period of each content is 30 days, so please use the kit within 30 days after opening.

REAGENT PREPARATION

Washing Buffer (1×) Preparation

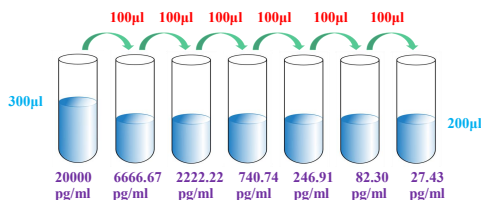
Pour entire contents (50 ml) of the **Washing Buffer Concentrate** (10×) into a clean 500 ml graduated cylinder. Bring to final volume of 500 ml with glass-distilled or deionized water. Transfer to a clean wash bottle and store at 2 to 25°C.

Standard Curve Preparation:

S1 to S7 and S0 is ready to use for serum and plasma.

Other sample type, prepare the standard curve with whatever buffer (SPB, Sample Prepared Buffer) is used to prepare the sample, such as cell culture supernatant, tissue grinding liquid, cell lysate, etc. Urine sample use AB (Assay Buffer) prepare standard curve.

The Mouse Granzyme B Standard EM0016S 200000 pg/ml 30 μ l + 270 μ l SPB serves as the high standard (20000 pg/ml). Pipette 200 μ l of SPB into each tube. Use the high standard to produce a 1:2 dilution series. Mix each tube thoroughly before the next transfer. SPB serves as the zero standard (0 pg/ml).



ASSAY PROCEDURE

Bring all reagents and samples to room temperature before use.

1 Prepare all reagents and working standards as directed in the previous sections.

2 Remove excess **CP** (Coated Plate) strips from the plate frame, return them to the foil pouch and reseal.

3 Add 50 μ l of **AB** (Assay Buffer) to each well.

4 Add 10 μ l of **Standard or sample** per well.

Ensure reagent addition is uninterrupted and completed within 15 minutes.

5 Add 50 μ l of **DA** (Detect Antibody) to each well.

6 Cover with an **SF** (Sealer Film). Incubate at room temperature (18 to 25°C) for 1 hours on a microplate **shaker** set at 500 rpm.

7 Aspirate each well and **wash**, repeating the process four times. Wash by filling each well with WB (Washing Buffer 300 μ l). Complete removal of liquid at each step is essential to good performance. After the last wash, remove any remaining WB (Washing Buffer) by aspirating or decanting. Invert the plate and **blot** it against clean paper towels.

8 Add 100 μ l of **SH** (Streptavidin-HRP) to each well.

9 Cover with a new **SF** (Sealer Film). Incubate at room temperature (18 to 25°C) for 30 min on a microplate **shaker** set at 500 rpm.

10 Repeat aspiration/**wash** as in step 7.

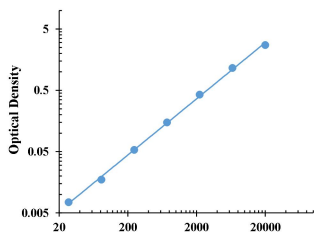
11 Add 100 μ l of **TS** (TMB Substrate) to each well. Incubate for 5-30 minutes at room temperature.

12 Add 100 μ l of **SS** (Stop Solution) to each well.

13 Determine the optical density within 30 minutes, using microplate **reader** set to 450 nm corrected with 570 nm or 630 nm.

TYPICAL DATA

Mouse Granzyme B Typical Standard



Mouse Granzyme B Concentration (pg/ml)

pg/ml	O.D.	Average	Corrected
0.00	0.0150	0.0130	0.0140
27.43	0.0230	0.0200	0.0215
82.30	0.0340	0.0290	0.0315
246.91	0.0680	0.0670	0.0675
740.74	0.1650	0.1630	0.1640
2222.22	0.4570	0.4220	0.4395
6666.67	1.2100	1.1460	1.1780
20000.00	2.7790	2.7510	2.7650

SENSITIVITY

The minimum detectable dose (MDD) of mouse Granzyme B is typically less than 9.91 pg/ml.

The MDD was determined by adding two standard deviations to the mean optical density value of ten zero standard replicates and calculating the corresponding concentration.

PRECISION

Intra-assay Precision (Precision within an assay) Three samples of known concentration were tested twenty times on one plate to assess intra-assay precision.

Inter-assay Precision (Precision between assays)

	Intra-assay Precision			Inter-assay Precision		
	S1	S2	S3	S1	S2	S3
Sample Number	22	22	22	6	6	6
Average (pg/ml)	341.6	1646.5	5204.5	367.9	1876.2	5851.4
Standard deviation	22.6	94.6	295.4	8.6	63.2	192.3
Coefficient of variation (%)	6.6	5.7	5.7	2.3	3.4	3.3

RECOVERY

The spike recovery was evaluated by spiking 3 levels of Mouse Granzyme B into health mouse serum sample. The un-spiked serum was used as blank in this experiment.

The recovery ranged from 107% to 132% with an overall mean recovery of 116%.

LINEARITY

To assess the linearity of the assay, five samples were spiked with high concentration of Granzyme B in mouse serum and diluted with Sample Diluent to produce samples with values within the dynamic range of the assay.

The linearity ranged from 94% to 111% with an overall mean recovery of 103%.

SAMPLE VALUES

Serum/Plasma – Thirty samples from apparently healthy mice were evaluated for the presence of Granzyme B in this assay. No medical histories were available for the donors.

Sample Matrix	Sample Evaluated	Range (pg/ml)	Detectable %	Mean of Detectable (pg/ml)
Serum	30	10.64-35.31	92	24.13

n.d. = non-detectable. Samples measured below the sensitivity are considered to be non-detectable.